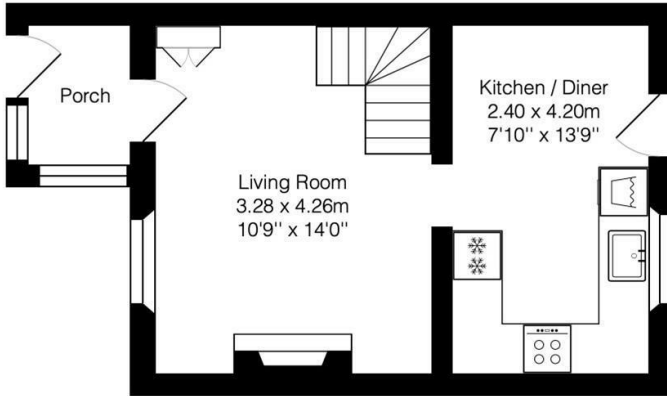


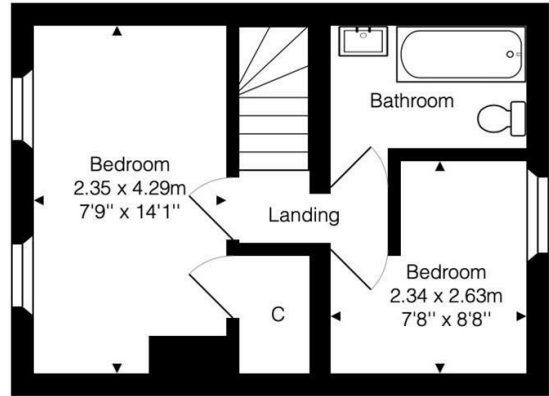


**10 Ashley Road
Bath, Somerset BA1 7TT
Guide Price £290,000**

**PERIOD HOME IN THE HEART OF POPULAR BATHFORD to the east of Georgian Bath.
Two bedrooms, sitting room & kitchen dining room.
NO CHAIN.**



Ground Floor
Area: 26.3 m² ... 283 ft²



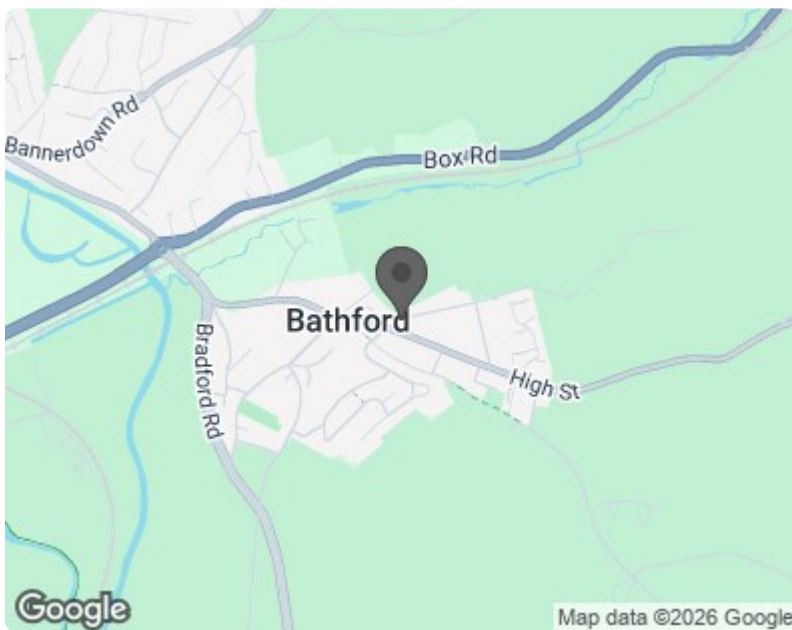
First Floor
Area: 25.7 m² ... 277 ft²

Total Area: 52.0 m² ... 560 ft² (excluding porch)

Whilst every attempt has been made to ensure the accuracy of the floorplan contained here, measurements of doors, windows, rooms and any other items are approximate and no responsibility is taken for any error, omission or mis-statement.

This plan is purely for illustrative purposes only and should be used as such by any prospective purchaser.

Area includes internal and external wall thickness
www.energyassessmentservices.co.uk



Energy Efficiency Rating		Current	Potential
Very energy efficient - lower running costs			
(92 plus) A			92
(81-91) B			
(69-80) C			
(55-68) D		65	
(39-54) E			
(21-38) F			
(1-20) G			
Not energy efficient - higher running costs			
England & Wales		EU Directive 2002/91/EC	

Environmental Impact (CO ₂) Rating		Current	Potential
Very environmentally friendly - lower CO ₂ emissions			
(92 plus) A			
(81-91) B			
(69-80) C			
(55-68) D			
(39-54) E			
(21-38) F			
(1-20) G			
Not environmentally friendly - higher CO ₂ emissions			
England & Wales		EU Directive 2002/91/EC	